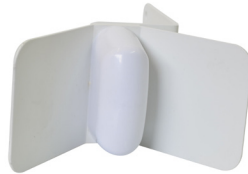




SCR12-2400
 Large Corner



SCR9-2400
 Mini Corner Reflector

Directional, Corner Reflector WiFi 2.4 & 5 GHz

- Available in 9-12 dBi gain; efficient Front to Back ratio
- Efficient Point-to-Point coverage
- Small aperture; minimizes wind loading
- Split balun feed provides superior bandwidth & gain performance

Mobile Mark's WiFi Corner Reflector antennas provide efficient point-to-point and point-to-multipoint coverage for remote monitoring, surveillance or mesh networks.

A SCR Series corner reflector antenna consists of a half-wave element, spaced approximately a quarterwave length in front of a reflector panel. The reflector panel serves to narrow both the horizontal and vertical pattern for increased gain and directivity.

This antenna design is able to provide excellent gain performance without sacrificing bandwidth. Cable Assemblies are available from Mobile Mark.

Model #	Gain	Frequency
SCR9-2400-WHT	9 dBi	2300-2600 MHz
SCR12-2400-WHT	12 dBi	2300-2600 MHz
SCR10-5250-WHT	10 dBi	5.15-5.35 GHz
SCR12-5725-WHT	12 dBi	5.72-5.93 GHz
SCR-2400/5500-WHT	9 dBi & 12 dBi	Dualband 2.4-2.5 GHz & 4.9-6.0 GHz

Color options available for above models
 WHT-White or BLK-Black

Specifications	
Frequency:	See above
Gain:	See above
VSWR:	2:1 max over band
Impedance:	50 Ohm nominal
Max Wind Velocity:	125+ mph (193 kph)
Operating Temp:	-40° to +85° C
Material:	Powder-coated aluminum, ASA plastic radome
SCR9-2400, SCR12-2400, SCR10-5250, SCR12-5725	
Maximum Power	100 Watts
Front-to-Back ratio	22 dB or better
Lightning Protection	DC grounded, external protection recommended
SCR-2400/5500	
Maximum Power	10 Watts
Front-to-Back ratio	30 dB or better
Lightning Protection	NA, external recommended
SCR9-2400, SCR10-5250, SCR12-5725, SCR-2400/5500	
Aperture	3" x 5.5" (76 mm x 140 mm)
Panel Size	3" x 3" ea (76 mm x 76 mm)
Weight	1 lb (0.5 kg)
SCR12-2400	
Aperture	7" x 10.5" (178 mm x 266 mm)
Panel Size	7" x 7" (178 mm x 178 mm)
Weight	2.2 lbs (1 kg)
Beamwidth:	
SCR9-2400	78° El, 60° Az
SCR12-2400	50° El, 36° Az
SCR10-5250	57° El, 30° Az
SCR12-5725	75° El, 26° Az
SCR-2400/5500	
2.4 -2.5 GHz	45° El, 35° Az
4.9 - 6.0 GHz	35° El, 25° Az
Pole Mounting:	Hardware included
Mounting Dimension:	Mounts up to 2" (51 mm) out side diameter (OD) mast Exception: SCR12-2400 mounts up to 2.5" (64 mm) OD mast
Connector:	N Jack (Female), attached at rear of antenna
Shock & Vibration:	EN 300 019-2-4, IEC 60068