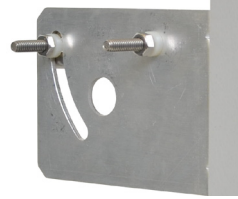




PS Series Sector Antenna



Adjustable Pole Mount Bracket



Adjustable Wall Mount Bracket

Directional Sector Panels Public Safety 4.9 GHz

- Weatherproof for outdoor use; compact and attractive for inbuilding
- High gain performance (14 dBi - 18 dBi)
- Available in 45°, 60° and 90° sector
- Adjustable tilt pole mount; optional wall mount adapter

Mobile Mark's PS Series sectorized panel antennas are excellent for deploying point to multipoint applications in the new 4.9 public safety band. The panel antenna is a single band design that uses PCB technology for high performance, lower cost and compact size.

Models are available in several sector sizes with different gain factors. Model PS18-4900-45 provides 18 dBi gain with a 45° sector. Model PS16-4900-60 provides 16 dBi gain, and a corresponding 60° sector. Model PS14-4900-90 provides 14 dBi gain, and a corresponding 90° sector.

Multiple antennas can be used to provide increased capacity, target coverage area or omni coverage. Front to back ratio is maintained at 25 dB or better. This allows true sectorization, or to isolate services to different government branches.

Because these antennas are compact, moderate pole mounting configurations can be used for easy network deployment. An adjustment slot on the mounting bracket allows for continuous adjustment up to 45° downtilt. The pole mounting bracket is included as standard hardware, but is packed separately.

An optional wall mount adapter is also available and allows for both horizontal and vertical adjustments

The antenna is housed in a very attractive light grey polystyrene plastic. Compact in size, 12.5" H x 3" W (32 cm x 7.6 cm) this antenna will be unobtrusive in any indoor or outdoor environment. These antennas are weather resistant and can withstand the harshest conditions.

The antenna terminates with an integral Female N connector. Mobile Mark can provide cable assemblies (jumpers) in a variety of cable types.

External lightning protection to protect the radio, is recommended, for outdoor antenna use.

Model #	Gain	Sector Size
PS14-4900-90-GRY	14 dBi	90 degree sector
PS16-4900-60-GRY	16 dBi	60 degree sector
PS18-4900-45-GRY	18 dBi	45 degree sector
PN-MK	Panel pipe mounting kit	
PN-WMK	Panel wall mounting kit	

Jumper cables are also available, built to order.

Specifications			
Frequency:	4.94 - 4.99 GHz	Material:	Light grey polystyrene radome
Gain:	See model table	Dimensions:	12.5" H x 3" W (all models) 32 cm x 7.6 cm
VSWR Max:	2:1	Weight:	1 lbs (0.45 kg)
Impedance:	50 Ohm nominal	Pole Mounting:	L-bracket with S.S. U-bolts, fits masts up to 2.5" (6.4 cm) OD, continuous adjustment up to 45° downtilt
Max Power:	25 watts	Optional Wall Mounting:	Double swivel, vertical (up to 30° downtilt) & horizontal (45° from center, 90° total) adjustment, order separately
Beamwidth:		Connector:	N Jack (Female)
PS14-4900-90	90° Az, 10° El	Water Ingress:	IPx5
PS16-4900-60	60° Az, 10° El		
PS18-4900-45	45° Az, 10° El		
Front to Back Ratio:	25 dB or better		
Lightning Protection:	External recommended		
Max Wind Velocity:	125+ mph (200 kph)		
Operating Temp:	-40° to +85° C		