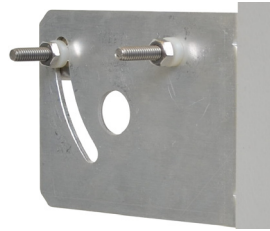
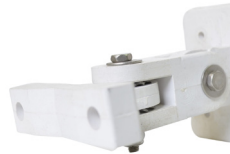




PS Series Sector Antenna



Adjustable Pole Mount Bracket



Optional Wall Mount Bracket

Directional Antennas, Sector Panels WiMAX 2.5 GHz

- High gain 12 dBi for point to point and multipoint applications
- Attractive low profile styling can be used for access point or subscriber
- Models cover 2.5 - 2.7 GHz WiMAX
- Standard pole mounting hardware is included

Mobile Mark's high frequency Panel antenna is designed for new Broadband systems, including WiMAX. These advanced designs accommodate the high-speed wideband performance that the new services will provide.

The PS Series sectorized panel antenna is excellent for deploying point to multipoint applications. The panel antenna is a broadband design that uses the latest PCB technology.

By designing the antenna specifically for WiMAX, we've made this model much smaller, higher performance and lower cost than most competitor offerings.

The PS12-2600-90 model for WiMAX 2.5-2.7 GHz is a 90° sector with 12 dBi gain. The antenna also features a 22° elevation beamwidth and a front-to-back ratio of 25 dB. This combination can be used for either point-to-point or point-to-multipoint.

The PS Series housing is a very attractive grey polystyrene plastic. Compact in size, 12.5" H x 3" W (32 cm x 7.6 cm) this antenna will be unobtrusive in any indoor or outdoor environment.

The PS Series antennas have an adjustable metal bracket, that allows easy alignment and tilt. The unit can be adjusted down in a verti-

cal axis in a continuous range using a sliding slot. With these full features, an array of antennas can be field assembled to provide a complete omni-cell.

An optional mounting bracket adapter can be provided for wall mount.

For maximum reliability and weatherproofing, the antennas are provided with a female N connector. The N connector exits at the back of these models.

Jumper cable assemblies are also available from Mobile Mark. We make custom assemblies using a variety of cables including low loss RF-400, RF-195, and traditional RG-58.

Model #	Frequency	Gain	Sector Size
PS12-2600-90-GRY	2.5 - 2.7 GHz	12 dBi	90 degrees
PN-WMK	Optional Wall Mount		
Connector is N female. Jumper cables are also available, built to order.			

Specifications			
Frequency:	2.5-2.7 GHz	Dimensions:	12.5" H x 3" W (all models)
Gain:	12 dBi	Weight:	32 cm x 7.6 cm
VSWR Max:	2:1	Pole Mounting:	1 lb (0.45 kG)
Impedance:	50 Ohm nominal	Optional Wall Mounting:	L-bracket with S.S. U-bolts, continuous adjustment up to 45° downtilt, standard, fits masts up to 2.5" (6.4 cm) OD Double swivel, vertical (up to 30° downtilt) & horizontal (45° from center, 90° total) adjustment, order separately
Max Power:	25 Watts	Connector:	Integral N Female
Beamwidth:	90° Az, 22° El		
Front to Back Ratio:	25 dB or better		
Lightning Protection:	External recommended		
Max Wind Velocity:	125 + mph (193 kph)		
Operating Temp:	-40° C to +85° C		
Material:	Light Grey polystyrene radome		