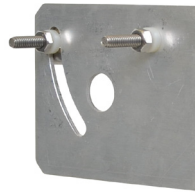
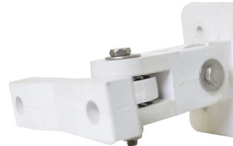




PN18-5900



Adjustable Pole Mount Bracket



Adjustable Wall Mount Bracket

ITS/DSRC Directional Antenna 18 dBi gain; 5.9 GHz

- Designed for Intelligent Transportation Services Networks using DSRC at 5.9 GHz
- Rugged site antenna, fiberglass radome and heavy aluminum base
- Antenna can be either wall mounted or pole mounted
- Hardware provided for heavy duty pipe mount

The PN18-5900 Series Antenna is designed to provide directional coverage as part of a specialized ITS/DSRC network at 5.9 GHz.

This compact directional panel antenna measures only 5.8" x 5.8" (146mm x 146mm).

The antenna offers 18 dBi gain, with a elevation beamwidth of 20° and a azimuth beamwidth which is also 20°. The front-to-back ratio is 25 dB minimum and the antenna operates from 5.850-5.925 GHz at better than 2:1 VSWR. With these performance factors, the antenna can be used effectively for point-to-point coverage.

This high performance, durable antenna will provide dependable coverage. In addition to being electrically efficient, it is also mechanically sound.

The antenna can handle a maximum power of 10 Watts. It is rated for a temperature range of -30°C to +80°C and has a wind survivability of 100 mph minimum, even with ½" radial ice.

Two models are available, the PN19-5900WM-WHT which is wall mounted, and the PN18-5900PM-WHT which is pole mounted.

The wall-mounting base for the "WM" version allows for both left-to-right and up-or-down adjustment. The offset distance from the wall is 3.75" (95mm) which gives the antenna sufficient clearance for up to 45° vertical and/or horizontal adjustment.

The Pole Mounting hardware for the "PM" version of the antenna is provided. The heavy duty L-bracket is attached to the pole with "U" bolts that can accommodate an outside diameter (O.D.) pole or pipe of up to 2 inches (51mm).

The mounting base on the "WM" wall mounted version can be attached with standard wall anchors (customer supplied).

The antenna terminates with an N jack connector exiting from the back of the antenna. Separate cable assemblies are available from Mobile Mark to connect the antenna to the modem.

Model #	Gain	Mounting
PN18-5900WM-WHT	18 dBi	Wall mount
PN18-5900PM-WHT	18 dBi	Pole mount

Specifications			
Frequency:	5850-5925 MHz	Dimensions:	5.8" x 5.8" (146mm x 146mm)
Gain:	18 dBi Max	Weight:	1 lbs (2.2 kg)
VSWR:	2:1 max over range	Wall mount option:	Swivel mounting, both vertical and horizontal
Impedance:	50 Ohms nominal	Pole mount: option:	L-bracket attached to pole up to 2" (51mm) outside diam. vertical adjustment up to 30°
Max Power:	10 Watts	Connector:	NJack (male) exits from back of antenna
Beamwidth:	20° Elevation 20° Azimuth	Shock & Vibration:	EN 61373, IEEE 1478, MIL-810G
Front to Back Ratio:	25 dB Minimum	Water Ingress	IPx5
Lightning Protection:	External Recommended		
Operating Temp:	-30° to +80° C		
Material:	White ASA Plastic		