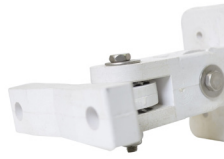




Broadband Panel



Optional Wall Mount Bracket



Adjustable Pole Mount Bracket

Mobile Mark's new broadband PN Series sectorized panel antennas are excellent for deploying point to multipoint applications in the 2.2-3.8 GHz band.

The panel antenna is a broadband design that uses the latest PCB technology for high performance, lower cost and compact size.

Models are available in two different gains. Model PN10-3000 provides 10 dBi gain and model PN16-3000 provides 16 dBi gain. Multiple antennas can be phased together to provide increased capacity and target a specific coverage area.

By maintaining a front to back ratio of better than 25 db, along with low side lobe levels, the possibility of off axis interference is greatly reduced.

Because these antennas are light and compact, moderate pole mounting configurations can be used for easy network deployment.

An adjustable tilt pole mounting bracket allows simple alignment. The mount contains a continuous adjustable tilt slot; the antenna can be adjusted up to 24° downtilt. All of the mounting hardware need for pole mounting is provided.

Directional Panel Broadband 2.2-3.8 GHz

- Compatible with multiple systems including dual 2.4/5 WiFi, WiMAX 2.5 or 3.65 GHz
- Compact and attractive for inbuilding
- High gain performance (10 dBi & 16 dBi)
- Adjustable tilt pole mount, up to 24° downtilt

An optional wall mount adapter is also available, which provides up to 45° adjustment in both the vertical and horizontal planes.

The PN Series antennas are housed in an attractive grey ASA plastic radome.

Compact in size, 9" H x 9" W (23 cm x 23 cm), this antenna will be unobtrusive in any indoor or outdoor environment. It will withstand a maximum wind velocity of 125+ mph (193 kph).

The antenna terminates with a 1 foot pigtail of RF-195 cable and an N Jack (Female) connector.

Mobile Mark can provide cable assemblies (jumpers) in a variety of cable types and lengths.

Model #	Gain
PN10-3000-3Y-GRY-12	10 dBi
PN16-3000-3Y-GRY-12	16 dBi
PN-WMK	Optional Wall Mount
Supplied with 1-ft (30.5 cm) RF-195 pigtail cable Jumper cables are also available, built to order.	

Specifications

Frequency:	2.2-3.8 GHz
Gain:	See model table
VSWR Max:	2:1
Impedance:	50 Ohm nominal
Max Power:	20 watts
Beamwidth:	
PN10-3000	65° Az, 45° El
PN16-3000	30° Az, 30° El
Front to Back Ratio:	25 dB or better
Lightning Protection:	External recommended
Max Wind Velocity:	125+ mph (193 kph)
Operating Temp:	-40° to +85° C
Material:	Grey ASA radome

Dimensions:	9" H x 9" W (23 cm x 23 cm)
Weight:	2.2 lbs (1 kg)
Mounting:	Adjustable pole mount, and Stainless steel U Bolts
Bracket:	
Pole mount	24° vertical downtilt adjustment 3 7/8" standoff (9.88 cm)
Wall mount	Up to 45° adjustable range 1 1/4" standoff (3.2 cm)
Cable:	1 ft. (30.5 cm) RF-195
Connector:	N Jack (Female)