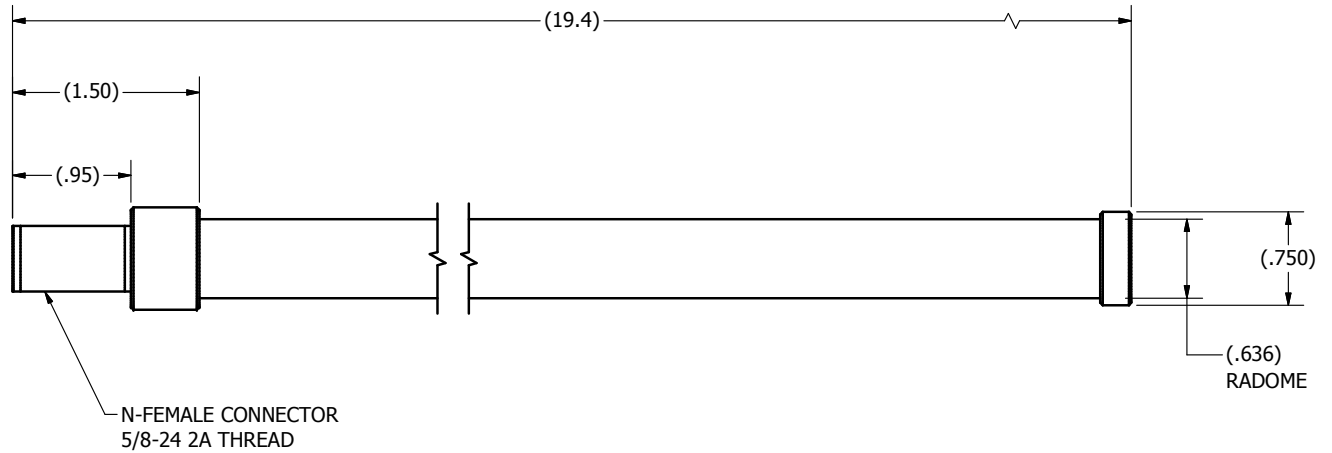
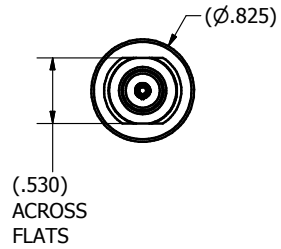


REVISION HISTORY			
REV	DESCRIPTION	DATE	APPROVED
1	CREATE ODD	06JAN15	JMP



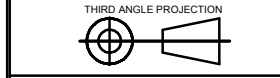
SUPPLIER PRINT ACCEPTANCE:

Accept drawing/specification:  
No changes needed:  
 This part is RoHS compliant  
 This part is REACH compliant  
 Accept drawing/specification.  
Notes/Mark-ups added  
 Cannot accept drawing/spec.  
Notes/Mark-ups added

Supplier Projected Outgoing Quality:  
SIGMA LEVEL : \_\_\_\_\_ or PPM: \_\_\_\_\_  
Signature \_\_\_\_\_ Date: \_\_\_\_\_

UNLESS OTHERWISE SPECIFIED  
DIMENSIONS ARE IN INCHES

FOR TOLERANCES NOT SPECIFIED USE:  
XX in ± .1 in, X.XX in ± .01 in, X.XXX in ± .005 in  
ANGULAR ± 1°, FRACTIONAL ± 1/64



**PCTEL PROPRIETARY DATA**

THE INFORMATION AND/OR DRAWINGS CONTAINED IN THIS DOCUMENT IS  
CONFIDENTIAL AND PROPRIETARY TO PCTEL, INC. AND MAY NOT BE USED,  
REPRODUCED, IN WHOLE OR IN PART, OR MODIFIED IN ANY WAY WITHOUT  
THE EXPRESS WRITTEN PERMISSION OF AN AUTHORIZED  
REPRESENTATIVE OF PCTEL, INC.

DRAWN: **JMP** DATE: **1/6/2015**

CHECKED: \_\_\_\_\_ DATE: \_\_\_\_\_

MATERIAL: **SEE COMPONENT PRINTS**

FINISH: **SEE COMPONENT PRINTS**

PCTEL, INC.  
471 BRIGHTON DRIVE  
BLOOMINGDALE, IL 60108  
PH. 630-372-6800  
FAX. 630-372-8077

DESCRIPTION: **ANTENNA, OMNI DIRECTIONAL, 2.4-2.5 GHZ, 8 DBI, NF**

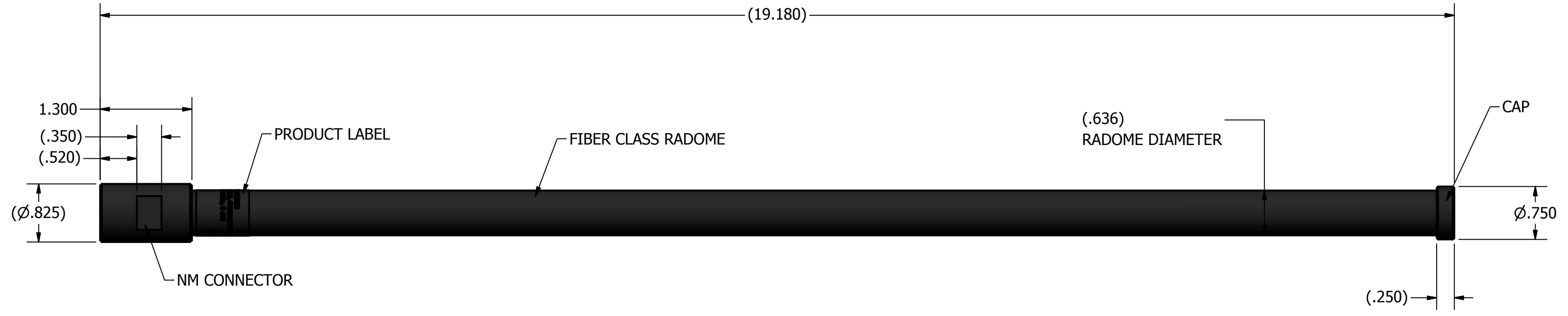
DRAWING NO. **ODD\_BOA24008NF**

SIZE	SCALE	SHEET
B	1:1	1 OF 1

NOTES:

1. INTERPRET DRAWING PER ANSI/ASME Y14.5
2. MATERIAL: SEE COMPONENTS
3. FINISH: SEE COMPONENTS
4. ELECTRICAL SPECIFICATIONS:  
2.4 - 2.5 GHz, 8 dBi  
VSWR: 2.4 - 2.5 GHZ, VSWR<1.5:1;
5. ALL MATERIALS SHALL BE ROHS COMPLIANT.
6. SEAL ANTENNA IN INDIVIDUAL PLASTIC BAG. THE BAG SHALL BE PIERCED WITH A SMALL HOLE TO ALLOW AIR TO ESCAPE SEALED BAG.
7. PACK ANTENNA IN A CARTON SIZED TO PROTECT FROM DAMAGE. PARTS SHALL BE PACKAGED TO PREVENT DAMAGE IN SHIPMENT AND HANDLING.
9. A (REF) DIMENSION IS FOR INFORMATION PURPOSES ONLY AND NO TOLERANCE IS IMPLIED.

REVISION HISTORY			
REV	DESCRIPTION	DATE	APPROVED
A	ODD DRAWING	29 JULY 15	VH



<p>SUPPLIER PRINT ACCEPTANCE:</p> <p><input type="checkbox"/> Accept drawing/specification. No changes needed.</p> <p><input type="checkbox"/> This part is RoHS compliant</p> <p><input type="checkbox"/> This part is REACH compliant</p> <p><input type="checkbox"/> Accept drawing/specification. Notes/Mark-ups added</p> <p><input type="checkbox"/> Cannot accept drawing/spec. Notes/Mark-ups added</p> <p>Supplier Projected Outgoing Quality:</p> <p>SIGMA LEVEL : _____ or PPM: _____</p> <p>Signature: _____ Date: _____</p>	<p>UNLESS OTHERWISE SPECIFIED DIMENSIONS ARE IN INCHES</p> <p>FOR TOLERANCES NOT SPECIFIED USE: X.X in ± .1 in, X.XX in ± .01 in, X.XXX in ± .005 in ANGULAR ± 1°, FRACTIONAL ± 1/64</p>	<p>DRAWN: JMP DATE: 2011-12-16</p> <p>CHECKED: _____ DATE: _____</p> <p>APPROVED: _____ DATE: _____</p>	<p>PCTEL, INC. BROADBAND TECHNOLOGY GROUP ANTENNA PRODUCTS 471 BRIGHTON DRIVE BLOOMINGDALE, IL 60108 PH. 630-372-6800 FAX. 630-372-8077</p> <p><b>PCTEL</b> <i>simplifying mobility</i></p>	
	<p>THIRD ANGLE PROJECTION</p>	<p>MATERIAL: SEE COMPONENT PRINTS</p>		<p>DESCRIPTION: ANTENNA, OMNI DIRECTIONAL, 2.4-2.5 GHZ, 8 DBI, NM CONN</p>
	<p>PROPRIETARY DATA THE INFORMATION CONTAINED IN THIS DOCUMENT IS OF A PROPRIETARY NATURE AND MAY NOT BE USED OR REPRODUCED WITHOUT THE EXPRESSED WRITTEN PERMISSION OF PCTEL INC., BLOOMINGDALE, IL 60108</p>	<p>FINISH: SEE COMPONENT PRINTS</p>		<p>DRAWING NO.: ODD-BOA24008NM</p>
	<p>SIZE: C</p>	<p>SCALE: NA</p>		<p>SHEET: 1 OF 1</p>

4

3

2

1

NOTES:

1. INTERPRET DRAWING PER ANSI/ASME Y14.5
2. MATERIAL: SEE COMPONENTS
3. FINISH: SEE COMPONENTS
4. ELECTRICAL SPECIFICATIONS:  
2.4 - 2.5 GHz, 8 dBi  
VSWR: 2.4 - 2.5 GHz, VSWR<1.5:1;
5. ALL MATERIALS SHALL BE ROHS COMPLIANT.
6. SEAL ANTENNA IN INDIVIDUAL PLASTIC BAG. THE BAG SHALL BE PIERCED WITH A SMALL HOLE TO ALLOW AIR TO ESCAPE SEALED BAG.
7. PACK ANTENNA IN A CARTON SIZED TO PROTECT FROM DAMAGE. PARTS SHALL BE PACKAGED TO PREVENT DAMAGE IN SHIPMENT AND HANDLING.
9. A (REF) DIMENSION IS FOR INFORMATION PURPOSES ONLY AND NO TOLERANCE IS IMPLIED.


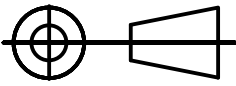
REVISION HISTORY			
REV	DESCRIPTION	DATE	APPROVED
A	NEW FORMAT FOR DRAWING, PILOT RUN	15 SEP. 15	VH

**ANTENNA**

BOA2400SDT7NF  
ANTENNA, OMNI DT7, NF CONN  
2.4-2.5 GHz, 8 dBi

W/O #

PRODUCT LABEL

SUPPLIER PRINT ACCEPTANCE: <input type="checkbox"/> Accept drawing/specification: No changes needed: <input type="checkbox"/> This part is RoHS compliant <input type="checkbox"/> This part is REACH compliant <input type="checkbox"/> Accept drawing/specification. Notes/Mark-ups added <input type="checkbox"/> Cannot accept drawing/spec. Notes/Mark-ups added Supplier Projected Outgoing Quality: SIGMA LEVEL : _____ or PPM: _____ Signature _____ Date: _____	UNLESS OTHERWISE SPECIFIED DIMENSIONS ARE IN MILLIMETERS  FOR TOLERANCES NOT SPECIFIED USE: [X mm ± 3 mm]      [X.X mm ± .3 mm] [X.XX mm ± .13 mm]      ANGULAR ± 1°	DRAWN      DATE <b>JMP</b> 2013-04-17  CHECKED      DATE  MATERIAL: SEE COMPONENT PRINTS FINISH: SEE COMPONENT PRINTS	 PCTEL, INC. 471 BRIGHTON DRIVE BLOOMINGDALE, IL 60108 PH. 630-372-6800 FAX. 630-372-8077	
	THIRD ANGLE PROJECTION 	DESCRIPTION ANTENNA, OMNI DT7, 2.4-2.5 GHz, 8 DBI, NF CONN		
PCTEL PROPRIETARY DATA THE INFORMATION AND/OR DRAWINGS CONTAINED IN THIS DOCUMENT IS CONFIDENTIAL AND PROPRIETARY TO PCTEL, INC. AND MAY NOT BE USED, REPRODUCED, IN WHOLE OR IN PART, OR MODIFIED IN ANY WAY WITHOUT THE EXPRESS WRITTEN PERMISSION OF AN AUTHORIZED REPRESENTATIVE OF PCTEL, INC.		DRAWING NO. ODD-BOA24008DT7NF		
		SIZE B	SCALE 1:1	SHEET 1 OF 1

4

3

2

1

4

3

2

1

NOTES:

1. INTERPRET DRAWING PER ANSI/ASME Y14.5
2. MATERIAL: SEE COMPONENTS
3. FINISH: SEE COMPONENTS
4. ELECTRICAL SPECIFICATIONS:  
2.4 - 2.5 GHz, 8 dBi  
VSWR: 2.4 - 2.5 GHz, VSWR<1.5:1;
5. ALL MATERIALS SHALL BE ROHS COMPLIANT.
6. SEAL ANTENNA IN INDIVIDUAL PLASTIC BAG. THE BAG SHALL BE PIERCED WITH A SMALL HOLE TO ALLOW AIR TO ESCAPE SEALED BAG.
7. PACK ANTENNA IN A CARTON SIZED TO PROTECT FROM DAMAGE. PARTS SHALL BE PACKAGED TO PREVENT DAMAGE IN SHIPMENT AND HANDLING.
9. A (REF) DIMENSION IS FOR INFORMATION PURPOSES ONLY AND NO TOLERANCE IS IMPLIED.

REVISION HISTORY			
REV	DESCRIPTION	DATE	APPROVED
A	NEW FORMAT FOR DRAWING, PILOT RUN	15 SEP. 15	VH

(636.16)

(Ø19.05)

(Ø20.96)

ANTENNA

BOA2400SDT7NM  
ANTENNA, OMNI DT7, NM CONN  
2.4-2.5 GHz, 8 dBi

W/O #

PRODUCT LABEL

SUPPLIER PRINT ACCEPTANCE: <input type="checkbox"/> Accept drawing/specification: No changes needed: <input type="checkbox"/> This part is RoHS compliant <input type="checkbox"/> This part is REACH compliant <input type="checkbox"/> Accept drawing/specification. Notes/Mark-ups added <input type="checkbox"/> Cannot accept drawing/spec. Notes/Mark-ups added Supplier Projected Outgoing Quality: SIGMA LEVEL : _____ or PPM: _____ Signature _____ Date: _____	UNLESS OTHERWISE SPECIFIED DIMENSIONS ARE IN MILLIMETERS  FOR TOLERANCES NOT SPECIFIED USE: [X mm ± 3 mm]      [X.X mm ± .3 mm] [X.XX mm ± .13 mm]      ANGULAR ± 1°	DRAWN      DATE <b>JMP</b> 2013-04-17  CHECKED      DATE  MATERIAL: SEE COMPONENT PRINTS FINISH: SEE COMPONENT PRINTS	 PCTEL, INC. 471 BRIGHTON DRIVE BLOOMINGDALE, IL 60108 PH. 630-372-6800 FAX. 630-372-8077
	THIRD ANGLE PROJECTION 	DESCRIPTION ANTENNA, OMNI DT7, 2.4-2.5 GHz, 8 DBI, NM CONN	
PCTEL PROPRIETARY DATA THE INFORMATION AND/OR DRAWINGS CONTAINED IN THIS DOCUMENT IS CONFIDENTIAL AND PROPRIETARY TO PCTEL, INC. AND MAY NOT BE USED, REPRODUCED, IN WHOLE OR IN PART, OR MODIFIED IN ANY WAY WITHOUT THE EXPRESS WRITTEN PERMISSION OF AN AUTHORIZED REPRESENTATIVE OF PCTEL, INC.			DRAWING NO. <b>ODD-BOA24008DT7NM</b>
SIZE B		SCALE 1:1	SHEET 1 OF 1

4

3

2

1

4

3

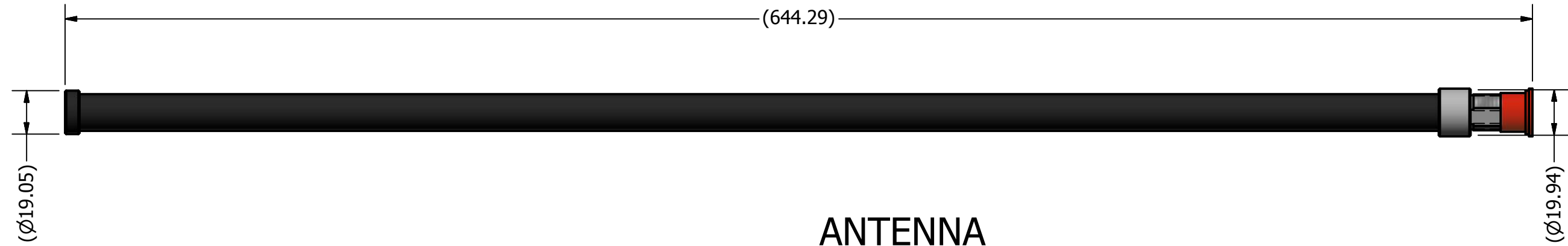
2

1

NOTES:


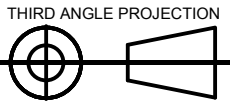
- 1. INTERPRET DRAWING PER ANSI/ASME Y14.5
- 2. MATERIAL: SEE COMPONENTS
- 3. FINISH: SEE COMPONENTS
- 4. ELECTRICAL SPECIFICATIONS:  
2.4 - 2.5 GHz, 8 dBi  
VSWR: 2.4 - 2.5 GHZ, VSWR<1.5:1;
- 5. ALL MATERIALS SHALL BE ROHS COMPLIANT.
- 6. SEAL ANTENNA IN INDIVIDUAL PLASTIC BAG. THE BAG SHALL BE PIERCED WITH A SMALL HOLE TO ALLOW AIR TO ESCAPE SEALED BAG.
- 7. PACK ANTENNA IN A CARTON SIZED TO PROTECT FROM DAMAGE. PARTS SHALL BE PACKAGED TO PREVENT DAMAGE IN SHIPMENT AND HANDLING.
- 9. A (REF) DIMENSION IS FOR INFORMATION PURPOSES ONLY AND NO TOLERANCE IS IMPLIED.

REVISION HISTORY			
REV	DESCRIPTION	DATE	APPROVED
A	NEW FORMAT FOR DRAWING, PILOT RUN	15 SEP. 15	VH



BOA2400SDT12NF  
 ANTENNA, OMNI DT12, NF CONN  
 2.4-2.5 GHz, 8 dBi  
 W/O #

PRODUCT LABEL

SUPPLIER PRINT ACCEPTANCE: <input type="checkbox"/> Accept drawing/specification: No changes needed: <input type="checkbox"/> This part is RoHS compliant <input type="checkbox"/> This part is REACH compliant <input type="checkbox"/> Accept drawing/specification. Notes/Mark-ups added <input type="checkbox"/> Cannot accept drawing/spec. Notes/Mark-ups added Supplier Projected Outgoing Quality: SIGMA LEVEL : _____ or PPM: _____ Signature _____ Date: _____	UNLESS OTHERWISE SPECIFIED DIMENSIONS ARE IN MILLIMETERS  FOR TOLERANCES NOT SPECIFIED USE: [X mm ± 3 mm]                      [X.X mm ± .3 mm] [X.XX mm ± .13 mm]            ANGULAR± 1°	DRAWN                      DATE <b>JMP</b> 2013-04-17  CHECKED                      DATE  MATERIAL: SEE COMPONENT PRINTS FINISH: SEE COMPONENT PRINTS	<div style="text-align: center;">  </div> <p>PCTEL, INC. 471 BRIGHTON DRIVE BLOOMINGDALE, IL 60108 PH. 630-372-6800 FAX. 630-372-8077</p>
	<div style="text-align: center;">  </div> <p style="text-align: center;"><b>PCTEL PROPRIETARY DATA</b></p> <p>THE INFORMATION AND/OR DRAWINGS CONTAINED IN THIS DOCUMENT IS CONFIDENTIAL AND PROPRIETARY TO PCTEL, INC. AND MAY NOT BE USED, REPRODUCED, IN WHOLE OR IN PART, OR MODIFIED IN ANY WAY WITHOUT THE EXPRESS WRITTEN PERMISSION OF AN AUTHORIZED REPRESENTATIVE OF PCTEL, INC.</p>	DESCRIPTION ANTENNA, OMNI DT12,2.4-2.5 GHZ, 8 DBI, NF CONN  DRAWING NO. ODD-BOA24008DT12NF SIZE B                      SCALE 1:1                      SHEET 1 OF 1	

4

3

2

1

4

3

2

1

NOTES:

1. INTERPRET DRAWING PER ANSI/ASME Y14.5
2. MATERIAL: SEE COMPONENTS
3. FINISH: SEE COMPONENTS
4. ELECTRICAL SPECIFICATIONS:  
2.4 - 2.5 GHz, 8 dBi  
VSWR: 2.4 - 2.5 GHz, VSWR<1.5:1;
5. ALL MATERIALS SHALL BE ROHS COMPLIANT.
6. SEAL ANTENNA IN INDIVIDUAL PLASTIC BAG. THE BAG SHALL BE PIERCED WITH A SMALL HOLE TO ALLOW AIR TO ESCAPE SEALED BAG.
7. PACK ANTENNA IN A CARTON SIZED TO PROTECT FROM DAMAGE. PARTS SHALL BE PACKAGED TO PREVENT DAMAGE IN SHIPMENT AND HANDLING.
9. A (REF) DIMENSION IS FOR INFORMATION PURPOSES ONLY AND NO TOLERANCE IS IMPLIED.

REVISION HISTORY			
REV	DESCRIPTION	DATE	APPROVED
A	NEW FORMAT FOR DRAWING, PILOT RUN	15 SEP. 15	VH

**ANTENNA**

BOA2400SDT12NM  
ANTENNA, OMNI DT12, NM CONN  
2.4-2.5 GHz, 8 dBi

W/O #

PRODUCT LABEL

SUPPLIER PRINT ACCEPTANCE: <input type="checkbox"/> Accept drawing/specification: No changes needed: <input type="checkbox"/> This part is RoHS compliant <input type="checkbox"/> This part is REACH compliant <input type="checkbox"/> Accept drawing/specification. Notes/Mark-ups added <input type="checkbox"/> Cannot accept drawing/spec. Notes/Mark-ups added Supplier Projected Outgoing Quality: SIGMA LEVEL : _____ or PPM: _____ Signature _____ Date: _____	UNLESS OTHERWISE SPECIFIED DIMENSIONS ARE IN MILLIMETERS  FOR TOLERANCES NOT SPECIFIED USE: [X mm ± 3 mm]                      [X.X mm ± .3 mm] [X.XX mm ± .13 mm]              ANGULAR± 1°	DRAWN                      DATE <b>JMP</b> 2013-04-17  CHECKED                      DATE  MATERIAL: SEE COMPONENT PRINTS FINISH: SEE COMPONENT PRINTS	 PCTEL, INC. 471 BRIGHTON DRIVE BLOOMINGDALE, IL 60108 PH. 630-372-6800 FAX. 630-372-8077	
	THIRD ANGLE PROJECTION 	DESCRIPTION ANTENNA, OMNI DT12, 2.4-2.5 GHz, 8 DBI, NM CONN		
PCTEL PROPRIETARY DATA THE INFORMATION AND/OR DRAWINGS CONTAINED IN THIS DOCUMENT IS CONFIDENTIAL AND PROPRIETARY TO PCTEL, INC. AND MAY NOT BE USED, REPRODUCED, IN WHOLE OR IN PART, OR MODIFIED IN ANY WAY WITHOUT THE EXPRESS WRITTEN PERMISSION OF AN AUTHORIZED REPRESENTATIVE OF PCTEL, INC.		DRAWING NO. <b>ODD-BOA24008DT12NM</b>		
		SIZE <b>B</b>	SCALE <b>1:1</b>	SHEET <b>1 OF 1</b>

4

3

2

1