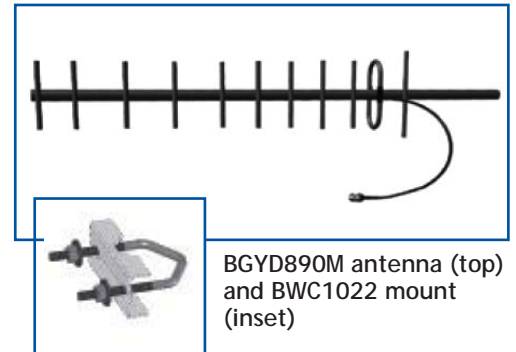


Yagi Antennas, 890-960 MHz, 12 dBd gain

The BGYD890M has been engineered to provide high gain broadband performance between the frequencies of 890-960 MHz. Solid 3/8" aluminum elements complement the fully welded dipole on the boom. The black powder coat BGYD890M comes with an integral low loss 2' RG213 feed line with a standard N-Female connector. High strength mounting clamp is supplied for vertical or horizontal polarization.

Features

- Dipole fully-welded to boom
- Black powder coat over stainless steel antenna assembly
- Mounting clamp included
- Antenna is supplied with a 2' pigtail (RG213) and N female connector



Antenna Electrical Specifications

Model	Frequency Range	-3 dB Horizontal Beamwidth	-3 dB Vertical Beamwidth	Front to Back Ratio	Nominal Gain
BGYD890M	890-960 MHz	40°	34°	20 dB	12 dBd

Mechanical Specifications

Model	Dimensions* (L x W)	Weight (Mass)	Cross Sectional Area	Lateral Thrust @ 100 mph	Rated Wind Velocity**
BGYD890M	37" x 6.6"	2.5 lbs	0.35 ft ²	8.75 lbs	125 mph

Technical Data

Maximum Power: 200 watts
Nominal Impedance: 50 ohms
VSWR: < 1.5:1 Nominal < 1.7:1 Maximum
Radiator Material: Aluminum
Mounting Method: Includes mounting hardware BWC1022

Model	Elements	Cable Type	Cable Length	Connector Type
BGYD890M	11	RG213	2 ft	N female

* Dimension does not include antenna cable

**120 mph with 1/2" radial ice (mph)